

# MODEL SS95

## Air-Operated Pulsation Dampener



SS95

CE

SS95 shown mounted  
on Maxim 50 pump



ACTIVE PULSE  
DAMPENER

FIELD SERVICE  
DESIGN

NO ELASTOMER  
RINGS

VARIOUS  
ADAPTER SIZES

PUMP OR INLINE  
MOUNTED

The SS95 uses pneumatic operation to significantly reduce liquid line surging and pulsation associated with reciprocating chemical pumps. Compatible with TREBOR's Magnum 610, Magnum 620, Maxim 50, Evolve 55, Mega 960 and Mega 120 pumps. Or with any other brand pumps by using the in-line option. The SS95 handles chemical temperatures up to 180 °C and is constructed with no metal parts or elastomer O-rings. Fluid contacts only ultrapure PTFE material, thereby protecting your process chemicals.

***This is PURE INNOVATION.***



**MAX FLOW**  
25 GPM (95 LPM)



**MAX TEMPERATURE**  
356 °F (180 °C)



**MAX PRESSURE**  
80 PSI / .55 MPa

**TREBOR**[treborintl.com](http://treborintl.com)

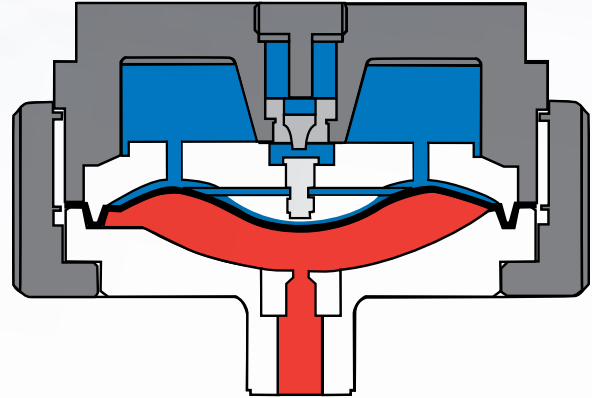
Trebor International | North/South America +1 800 669 1303 | Europe +49 9120 1804-65 | Asia +65 6684 7319

A Unit of IDEX Corporation

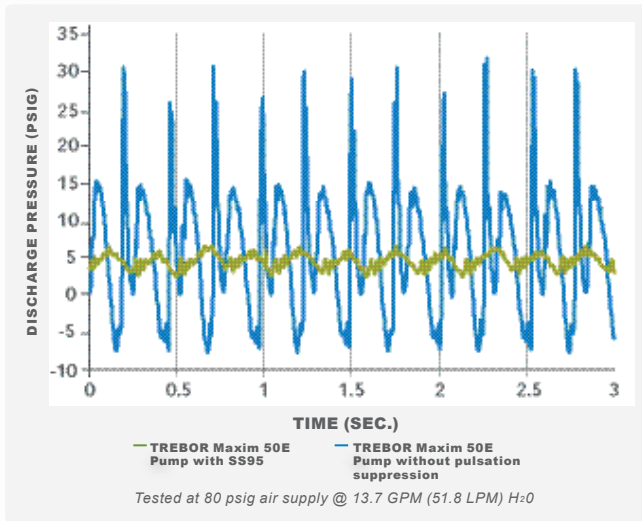
### OPERATING PRINCIPLE

Air is supplied to the SS95 Pulsation Dampener equal to or greater than the pump air supply pressure. This pressurizes the air chamber (shown in blue) that is isolated from the chemical chamber (shown in red) by the PTFE diaphragm. As the pump strokes, the chemical pulsations are dampened by the pressurized air chamber, bleeding off small amounts of air with each pulsation. The air chamber periodically recharges itself when enough air has bled off to allow contact with the pilot valve. The SS95 utilizes a few periodic moving parts and will typically provide more than 200 million pump cycles of service between maintenance intervals.

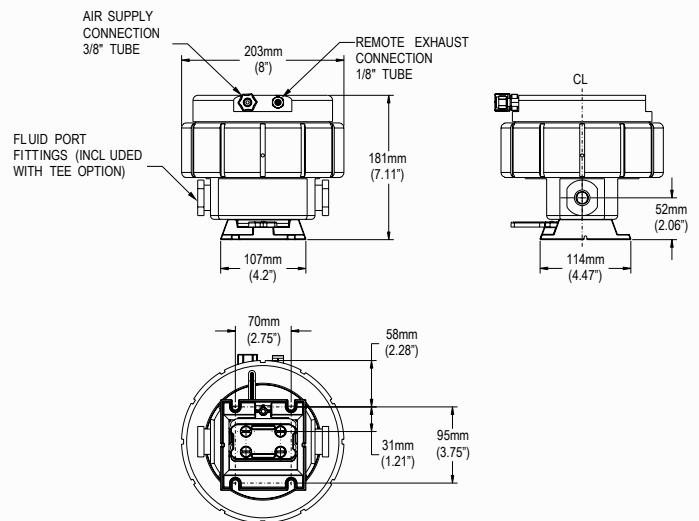
■ Fluid  
■ Air



### PULSATION DAMPENING EFFECTIVENESS



### DIMENSIONS IN MILLIMETERS (IN.)



### SS95 SURGE SUPPRESSOR OPTIONS

SURGE	SS95	SS95 Pulsation Dampener
FLUID CONNECTIONS	P1	Connection to Magnum 610, 610NM, Maxim 50, Evolve 55
	P2	Connection to Mega 960
	P5	Connection to Mega 120
	L1	Inline 1" Flare
	L2	Inline 3/4" Flare
	LF	Inline 3/4" Flare connection
OPTIONS	A0	No Option added
	A4	PP Union Nut

Example of an order number based on configuration options:

SS95 P1 A0