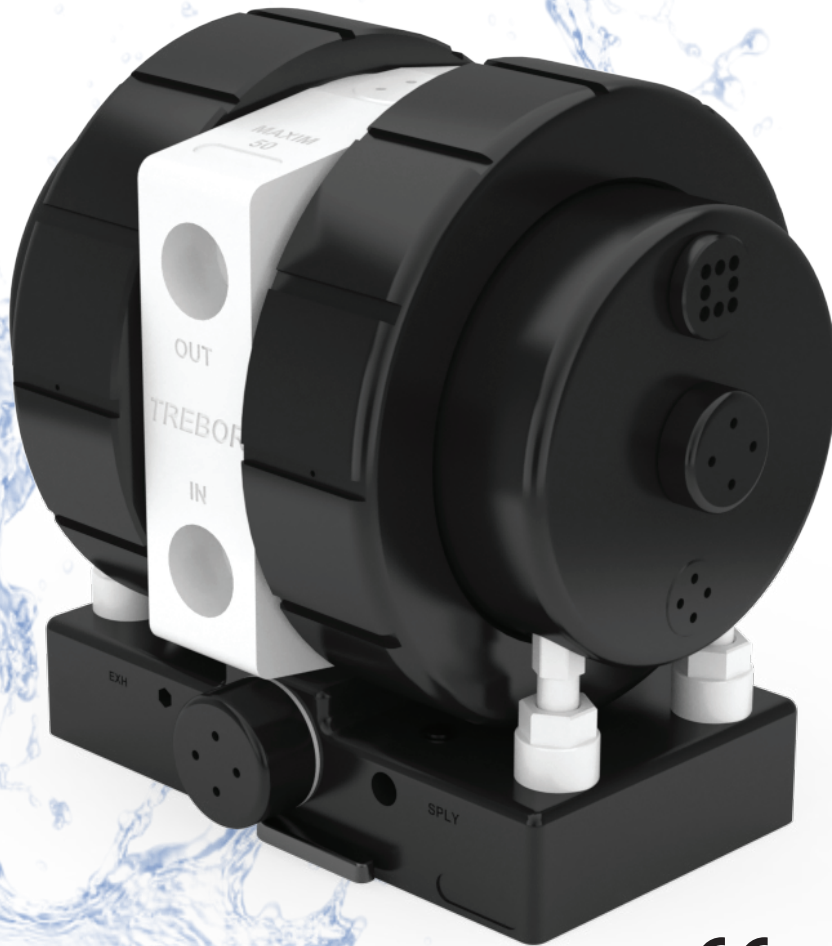


MAXIM 50

Dependable, Custom Performance



CE

MAX FLOW
50 LPM / 13.2 GPM

**NON-PENETRATED,
DOUBLE LAYER
PTFE DIAPHRAGM**

**PTFE/PFA
FLUID PATH**

**SMART PILOT
TECHNOLOGY**

**QUICK RELEASE
BASE**



The Trebor® Maxim 50 chemical pump is air operated and completely non-metallic, making it ideal for aggressive, ultra-high purity applications. Its unique construction eliminates the need for o-ring seals and includes a fluid path made from virgin PTFE and PFA materials. The result is reliable, contamination free operation at temperatures up to 180 °C. The Maxim 50's revolutionary design allows the pump to be configured for your specific application needs. Select from four control base options: recirculation, chemical delivery, external control, or user configured control.

TREBOR®

treborintl.com

Trebor International | North/South America +1 800 669 1303 | Europe + 49 9120 180465 | Asia +65 974 74002

A Unit of IDEX Corporation

© Copyright 2022, Trebor Inc. All rights reserved.

**MAX FLOW**

50 LPM / 13.2 GPM

**MAX TEMPERATURE**180 °C / 356 °F M50R/E/U
100 °C / 212 °F M50D**MAX PRESSURE**80 PSI / .55 MPa M50D/E/U
60 PSI / .41 MPa M50R**DRY SUCTION LIFT**

4 m/ 13 ft.

**MATERIALS**

VIRGIN PTFE/PFA Fluid Path

**SHIPPING WEIGHT**13.60 kg/ 30 lbs. M50R/E/U
10.88 kg/ 24 lbs. M50D**APPLICATIONS**Semiconductor/Electronics, LED/
Flat Panel, Chemical Processing
Delivery, AerospaceM50D
Standard Head



MAXIM 50 | OPTIONS (LIMITED LIST SHOWN)

PUMP	
M50R	Maxim 50 Recirculation Pump
M50D	Maxim 50 Chemical Delivery Pump
M50E	Maxim 50 External Control Pump With End-of-Stroke Probes (2 ea.)
M50U	Maxim 50 External Control Pump Without End-of-Stroke Probes

FLUID CONNECTION	
00000	No Adapter Fitting
B0800	1/2" Weldable PFA Pipe
F0800	1/2" Flare Tube Adapter
F1200	3/4" Flare Tube Adapter
F1600	1" Flare Tube Adapter
P1200	3/4" NPT Adapter Nuts
T1200	3/4" PFA Tube Stubout
S0100	1" Flare Inlet x 3/4" Flare Outlet

LEAK DETECTION	
0	No Probe
1	*Leak Probes (2 units)

*Requires Amplifier

OPTIONS	
A0	No Option
A2	Cycle Probe
A6	Polypropylene or PVDF Union Nuts
B2	Remote Exhaust (M50R & M50D only)
B8	Locked Push Plate (M50E, M50U, & M50D only)
M0	Magnetic Shuttle (M50R & M50D only)
M1	Magnetic Shuttle w/ Cycle Probe (M50R & M50D only)

More Options Available, Contact Trebor for Information

PUMP OPTION

Example of an order number based on configuration options:

M50D	F1600	1	M1
-------------	--------------	----------	-----------

MAXIM 50 | ACCESSORIES

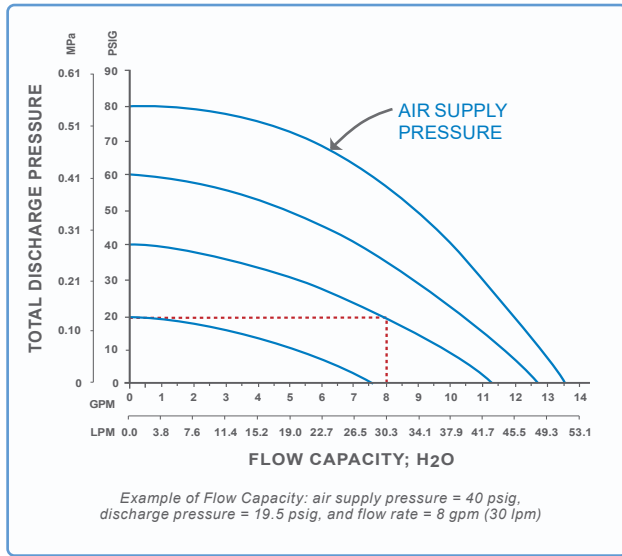
PROBES	
DP-S-01	AMPLIFIER; CYCLE/LEAK
DP-C-2	CYCLE
DP-C-27	CYCLE; MAGNETIC SHUTTLE
DP-L-20	LEAK SENSOR

More Options Available, Contact Trebor for Information

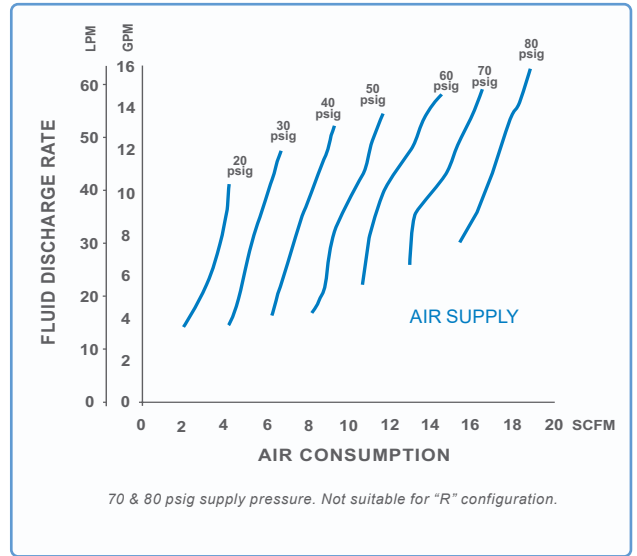
SURGE SUPPRESSOR	
SS85P1A0	Port Mounted
SS95P1A0	Port Mounted (PVDF Union Nut)



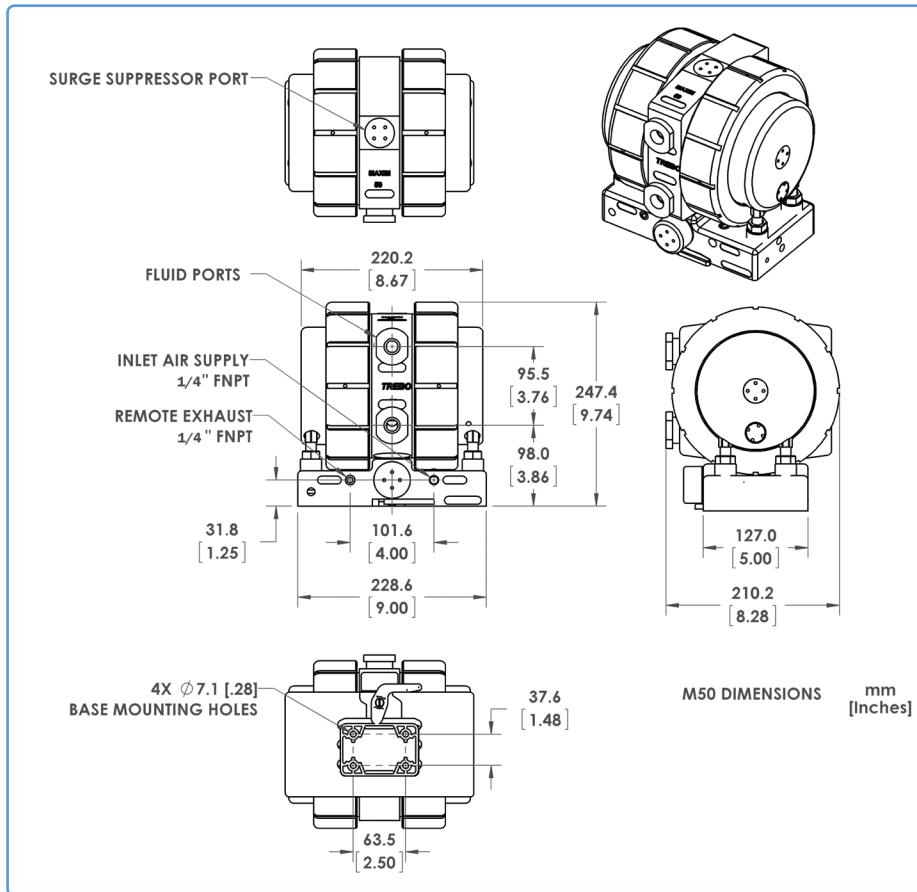
FLOW PERFORMANCE



AIR CONSUMPTION



DIMENSIONS & CONNECTIONS



TREBOR®

Trebor Internaional
8100 South 1300 West
West Jordan, Utah 84088 USA
Toll Free: (800) 669 1303
Email: treborinfo@idexcorp.com

TREBOR - NORTH AMERICA

8100 South 1300 West
West Jordan, Utah 84088 USA
Tel: (801) 561 0303
Mobile: (385) 246-5786
Email: TRE-CustomerServiceNA@idexcorp.com

TREBOR - EUROPE / MIDDLE EAST

Kalkofenstrasse 24 A
D-91227 Leinburg, Germany
Tel: +49 9120 1804-65
Mobile: +49 170 2413562
Regional Sales Manager: Manfred Stiegler
Email: MStiegler@idexcorp.com

TREBOR - ASIA

11 Ubi Road 1
Singapore, 408723
Office: +65 66847304
Mobile: +65 97474002
Regional Sales Manager: Anthony Neo
Email: ANeo@idexcorp.com



Trebor International | North/South America +1 800 669 1303 | Europe + 49 9120 180465 | Asia +65 974 74002

A Unit of IDEX Corporation

treborintl.com

TREBOR®