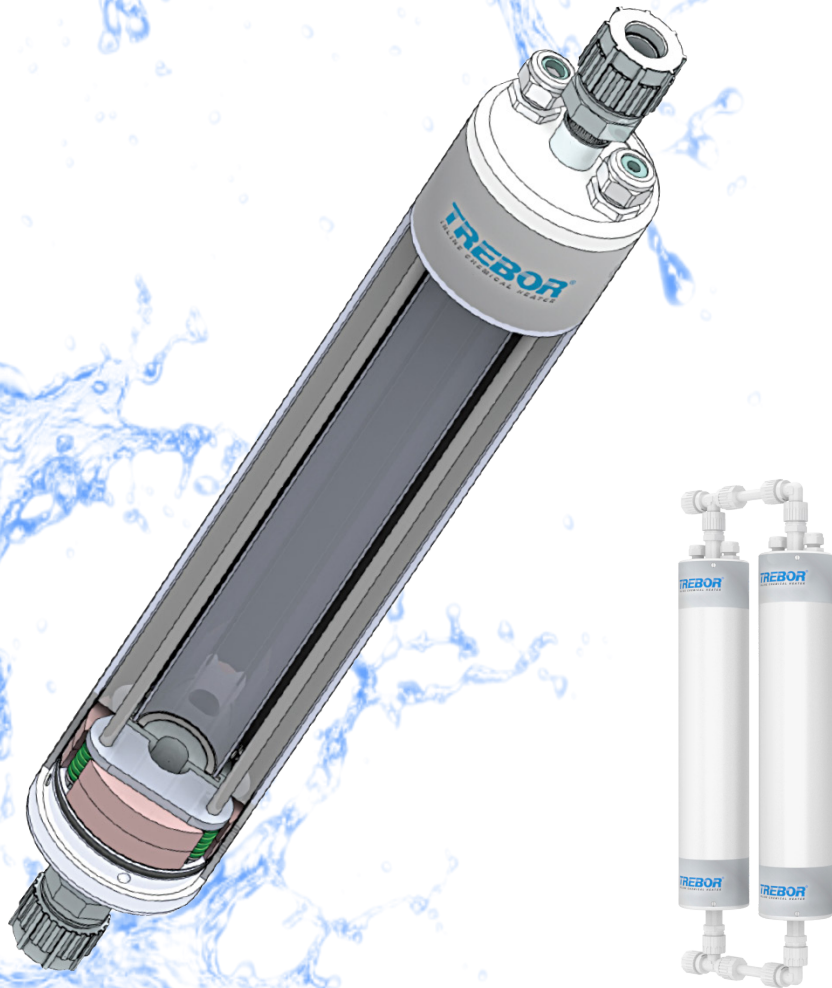


INLINE CHEMICAL HEATER



QUARTZ ELEMENT
WITH THERMOCOUPLES

PATENTED FLUID PATH
TECHNOLOGY

HIGH PURITY
FLUID PATH

SERIES OR PARALLEL
CONFIGURATION

NO PURGING
REQUIRED

*Heating modules may be combined
to achieve desired capacity and plumbing.*

Trebor's Inline Chemical Heaters are unlike any other heating technology on the market because of our thin film on quartz electric resistive technology. Our technology, combined with high-purity materials, a quick ramp up time, crevice-free design, and customizable configurations, creates reliable and efficient heater.

Because of the design simplicity and flexibility, we can accommodate a wide range of application needs with only two models – a high temperature version and a low temperature version. These heaters are well-suited as a plug-and-play design for a variety of applications, especially with fluids that need to be heated quickly and at point-of-use.



TREBOR®

treborintl.com

Trebor International | North/South America +1 800 669 1303 | Europe + 49 9120 180465 | Asia +65 974 74002

A Unit of IDEX Corporation

© Copyright 2023, Trebor Inc. All rights reserved.



MAX FLOW

28 LPM / 7 GPM



MAX TEMPERATURE

100 °C / 212 °F ICA
200 °C / 392 °F ICB



MAX PRESSURE

80 PSI / .55 MPa



MATERIALS

Quartz element with housing options
(PTFE, PFA, Stainless Steel)



POWER

3 kW, 4 kW, or 6 kW combinations
single phase or three phase



VOLTAGE OPTIONS

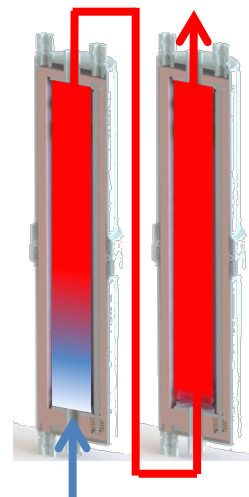
208, 400



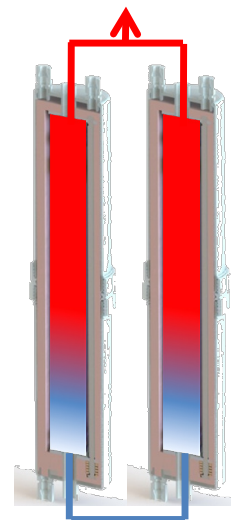
CERTIFICATIONS

CE, SEMI S2, SEMI S3

MANIFOLD OPTIONS



SERIES



PARALLEL





HEATER OPTIONS

ICA & ICB OPTIONS

MODEL	ICA Chemical Heater $\leq 100^{\circ} \text{C} \geq 2 \text{ LPM}$ ICB Chemical Heater $> 100^{\circ} \text{C}$ and/or $< 2 \text{ LPM}$
CONFIGURATION	03V208S 3kW, 208 VAC, Single ϕ 03V400Y 3kW, 400 VAC, 3 ϕ Wye 04V208S 4kW, 208 VAC, Single ϕ 04V208D 4kW, 208 VAC, 3 ϕ Delta 04V400Y 4kW, 400 VAC, 3 ϕ Wye 06V400S 6kW, 400 VAC, Single ϕ 06V400D 6kW, 400 VAC, 3 ϕ Delta More Options Available, Contact Trebor for Information
FLUID CONNECTIONS	F04 1/4" Flare F08 1/2" Flare F12 3/4" Flare X04 1/4" Super 300 Pillar X08 1/2" Super 300 Pillar X12 3/4" Super 300 Pillar
LEAK SENSOR	A N/O 24 vdc Conductive B N/C 24 vdc Conductive
OVER-TEMP SAFETY SENSORS	A J-Type T/C (For Single \emptyset configurations only) B PT1000 (RTD) C PT100 (RTD)

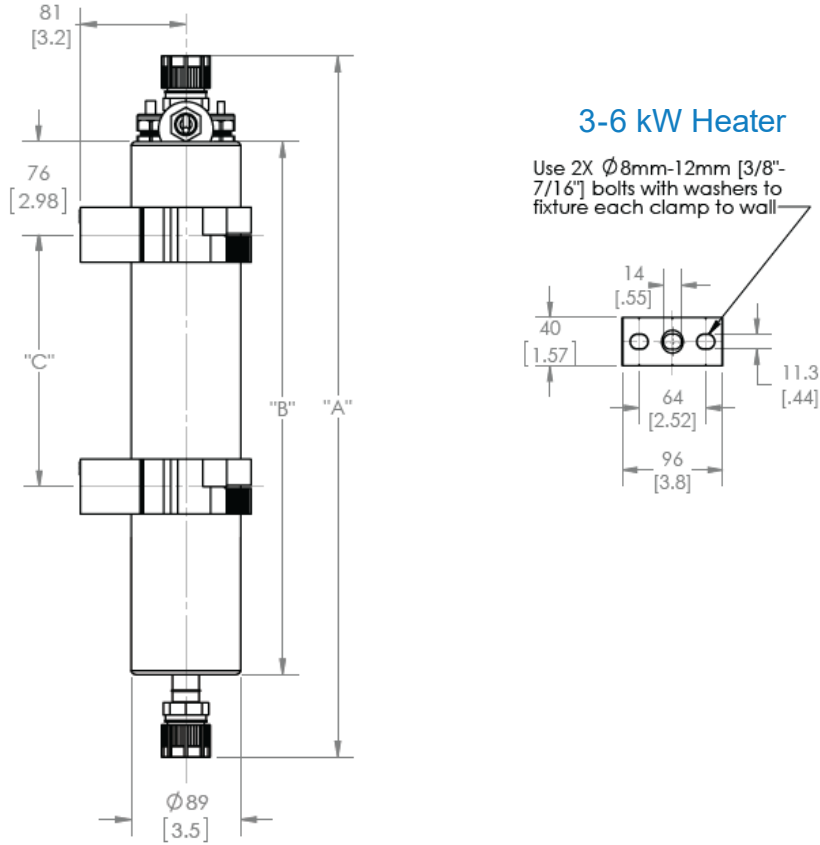
Example of an order number based on configuration options:

ICA	03V400Y	F12	A	B
-----	---------	-----	---	---

ICA & ICB ACCESORIES

LIQUID LEVEL SENSORS	DP-L-51 CAPACITIVE CLIP ON
	DP-L-52 OPTICAL CLIP ON

DIMENSIONS IN MILLIMETERS (IN.)



Power	Fitting	*Height (mm [in])			WEIGHT (kg [lbs.])
		"A"	"B"	"C"	
6kW	1/4" Pillar	722 [28.4]	605 [23.8]	51-373 [2.0 - 14.7]	5.02 [11.07]
	1/2" Pillar	739 [29.1]			
	3/4" Pillar	758 [29.8]			
	1/4" Flare	755 [29.7]			
	1/2" Flare	764 [30.1]			
	3/4" Flare	772 [30.4]			
3kW & 4kW	1/4" Pillar	552 [21.7]	433 [17.0]	51-203 [2.0 - 8.0]	3.88 [8.55]
	1/2" Pillar	569 [22.4]			
	3/4" Pillar	588 [21.1]			
	1/4" Flare	585 [23.0]			
	1/2" Flare	594 [23.4]			
	3/4" Flare	602 [23.7]			

TREBOR®

Trebor Internaional
8100 South 1300 West
West Jordan, Utah 84088 USA
Toll Free: (800) 669 1303
Email: treborinfo@idexcorp.com

TREBOR - NORTH AMERICA

8100 South 1300 West
West Jordan, Utah 84088 USA
Tel: (801) 561 0303
Mobile: (385) 246-5786
Regional Sales Manager: Danny Orendain
Email: dorendain@idexcorp.com

TREBOR - EUROPE / MIDDLE EAST

Kalkofenstrasse 24 A
D-91227 Leinburg, Germany
Tel: +49 9120 1804-65
Mobile: +49 170 2413562
Regional Sales Manager: Manfred Stiegler
Email: MStiegler@idexcorp.com

TREBOR - ASIA

11 Ubi Road 1
Singapore, 408723
Office: +65 66847304
Mobile: +65 97474002
Regional Sales Manager: Anthony Neo
Email: ANeo@idexcorp.com

