

Mega 960D PUMP

Operation / Maintenance Manual



CONTENTS

1	INSTALLATION	3
1.1	UNPACKING	3
1.2	TIE BOLT TORQUE	3
1.3	UTILITIES / HOOK-UP	3
2	OPTIONS	7
2.1	FLUID PORT CONNECTION OPTIONS	7
2.2	FLUID FITTINGS / SURGE SUPPRESSOR HOOK-UP	8
2.3	OPTIONAL LEAK SENSING	9
2.3.a	Installation	10
3	START-UP	11
3.1	HIGH TEMPERATURE OPERATION	11
3.2	PERFORMANCE CHARTS	11
4	MAINTENANCE	13
4.1	PREVENTIVE MAINTENANCE SCHEDULE	13
4.1.a	Preventive Maintenance Record	Error! Bookmark not defined.
4.2	RECOMMENDED SPARE PARTS	16
4.3	TOOLS	18
4.4	PARTS ILLUSTRATION	19
4.5	PARTS LIST	19
4.6	CLEAN-UP	20
4.7	DISASSEMBLY	20
4.7.a	Head Disassembly	21
4.7.b	Body Disassembly	21
4.8	ASSEMBLY	22
4.8.a	Pilot Valve (Both Heads)	22
4.8.b	Shuttle Spool Assembly	23
4.8.c	Shuttle Assembly (Master Head)	24
4.8.d	Quick Exhaust (Both Heads)	25
4.8.e	Body Assembly	25
4.8.f	Final Assembly	28
4.9	TESTING	29
4.9.a	Performance Test	29
4.9.b	Dry Pump	29
4.9.c	Dry Suction	29
5	TROUBLESHOOTING	30
6	WARRANTY AND EXCLUSIONS	31
7	CONTACT INFORMATION	31
7.1	GENERAL CONTACT INFORMATION	31
7.2	TECHNICAL SUPPORT	31
7.3	REGIONAL REPRESENTATIVES	31
8	ADDENDA	32
8.1	DISCHARGE SLEEVE ADDENDUM	32
8.2	MAGNETIC SHUTTLE ADDENDUM	9

1 INSTALLATION

1.1 UNPACKING

After unpacking, the pump should be checked for any damage that may have occurred during shipment. Damage should be reported to the carrier immediately.

The following items should be included within the shipping container:

<u>Qty</u>	<u>Item</u>	<u>Description</u>
1	960D	Mega 960D Pump

1.2 TIE BOLT TORQUE

The tie bolts on the pump are tightened before leaving the factory. However, relaxation may occur due to handling, material creep, or other unforeseen events. Trebor recommends that all eight tie bolts be re-tightened upon pump install. The following procedure should be used.

1. Remove black tie bolt caps (Item 17 in 4.4 Parts Illustration) from both sides of all 8 tie bolts.
2. Apply 60 in-lbs. of torque to each slave side bolt while holding the master side bolt stationary. A star-pattern is advised.
 - a. The master side is the left side of the pump if you are looking at the fluid ports.
3. Replace tie bolt caps.

1.3 UTILITIES / HOOK-UP

The pump is mounted using four 1/4" bolts. It is recommended that the pump be mounted not more than 15° from level to maintain its self-priming ability and pumping efficiency.

Air Inlet: 1/2" FNPT (3/8" Dia. [8mm] supply tube minimum).

Air Supply: 25-80 psig (1.4 - 4.1 bar) clean dry air or nitrogen. (For Air Consumption, See Section 3.1 Performance Charts)

Fluid Ports: Inlet/Outlet Fluid Fittings and Surge Suppressor require torquing during pump installation. See Section 2 for hook- up diagram and torque values.

Remote Exhaust: 1/4" FNPT (3/8" Dia. minimum tube up to 6' length, 1/2" Dia. Minimum tube greater than 6' length).

STANDARD BASE

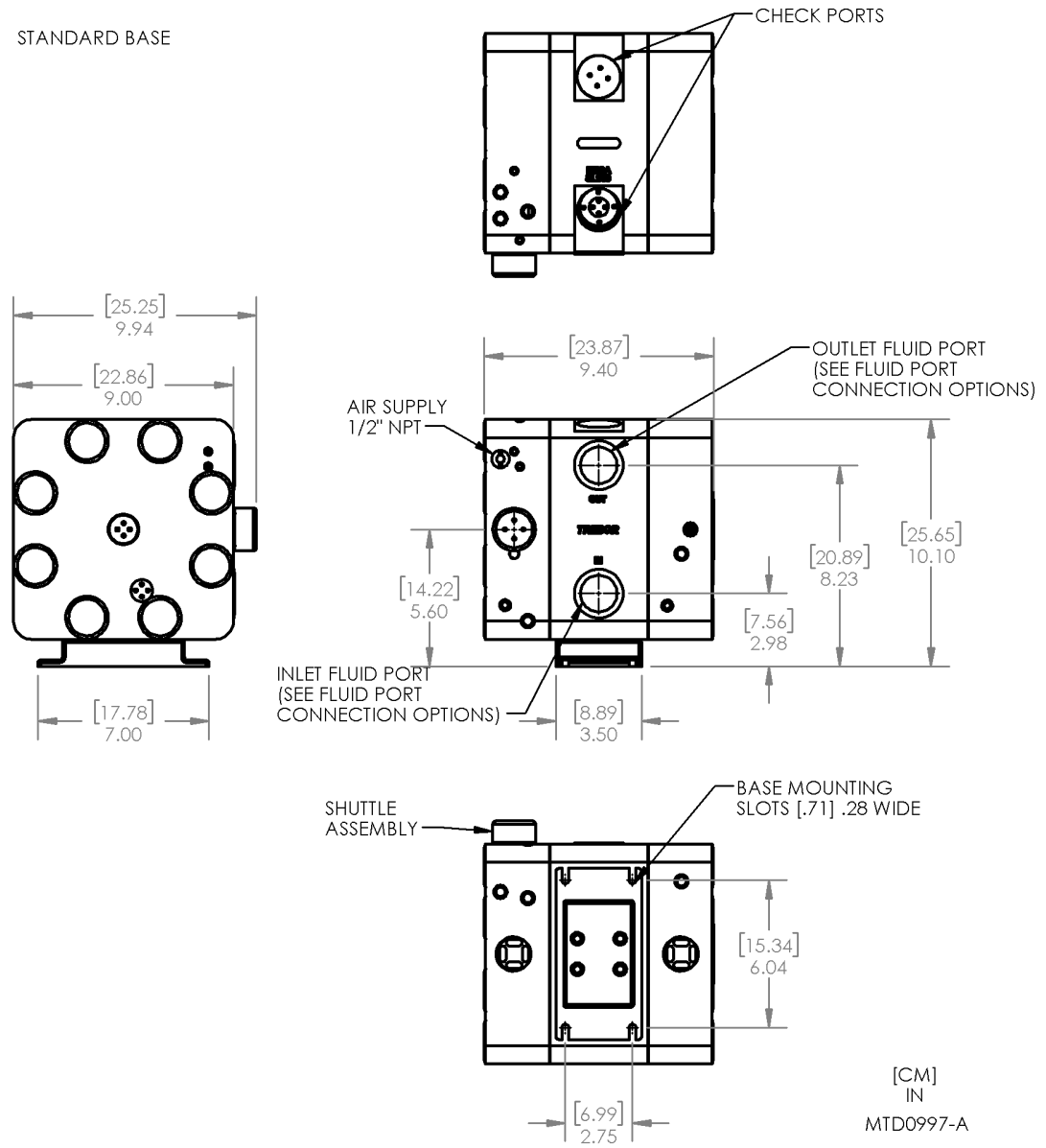


Figure 1-1

QUICK CHANGE BASE

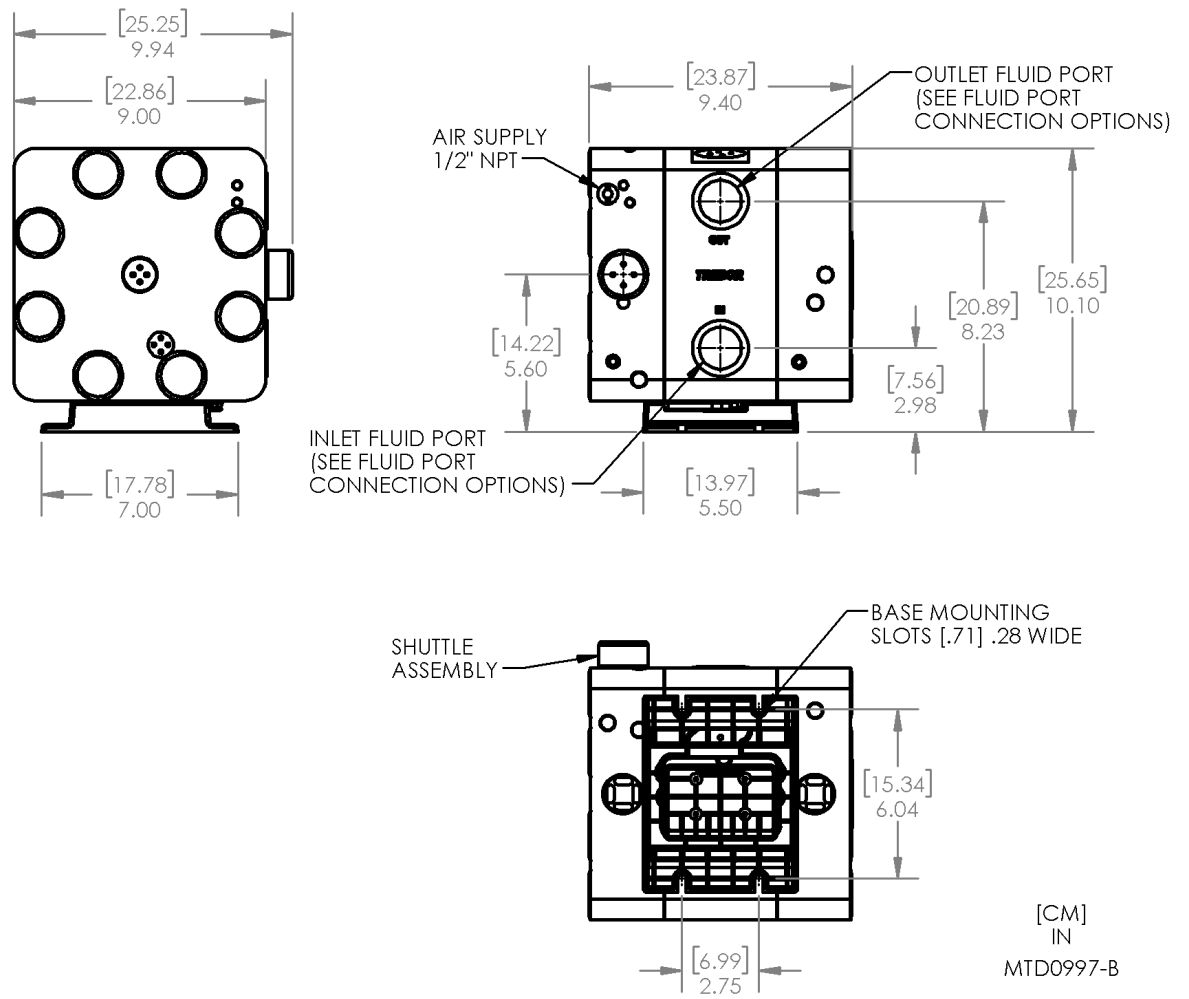


Fig 1-2

2PC BASE

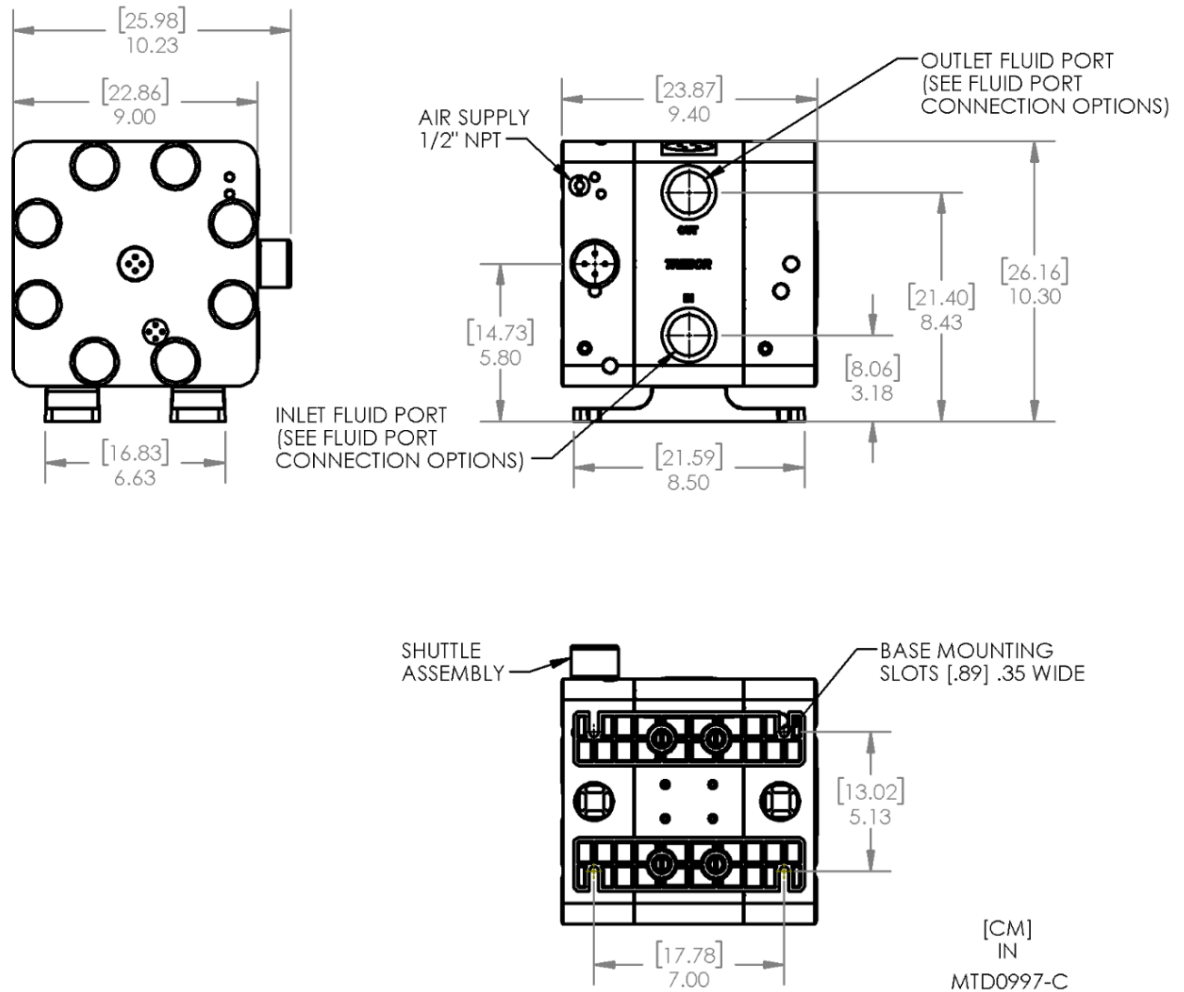


Fig 1-3

ATTENTION: The pump should be operated with clean, dry air or nitrogen. Particulate, water and oils in the air supply can damage the pump.

NOTE:

1. It is recommended that a filter be placed on the discharge side of the pump.
2. Although extensive efforts are made to deliver pumps to our customers completely dry, new pumps may contain residual moisture from their final DI water test.

Recommended Maximum Operating Levels:

Maximum supply CDA/N2 pressure: 80 psig (5.5 bar)

Maximum fluid temperature: 212°F (100°C)

2 OPTIONS

2.1 FLUID PORT CONNECTION OPTIONS

NOTE: Use O-ring to seal stainless steel or other rigid plumbing.

Available Options

- A) PFA Weldable pipe.....3/4" and 1"
- B) Flare style tube adapter.....3/4" and 1"
- C) PFA tube stub out.....3/4"
- D) NPT adapter nut.....3/4" and 1"
- E) PILLAR Super 300.....1" (Not Shown)
- F) Stainless Steel Ground Adapter.....needs one of above fittings (Not Shown)
- G) Stainless Steel Compression..... 1" (Not Shown)

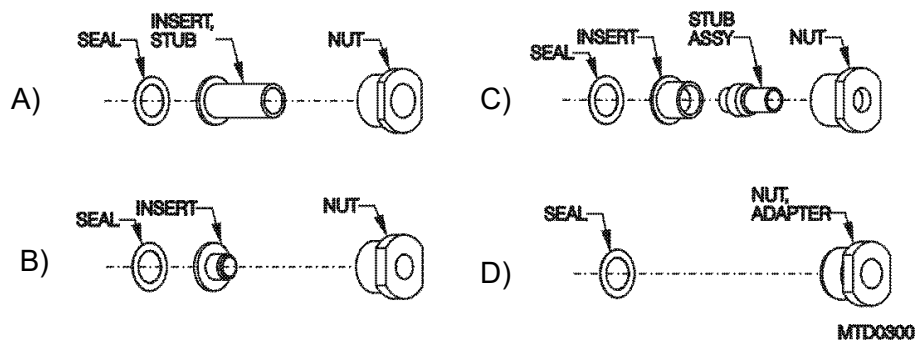


Figure 2-1

2.2 FLUID FITTINGS / SURGE SUPPRESSOR HOOK-UP

<u>Surge Suppressor</u>	<u>Assembled Height: IN (CM)</u>
SS85	17.12 (43.49)
SS95	15.06 (38.25)

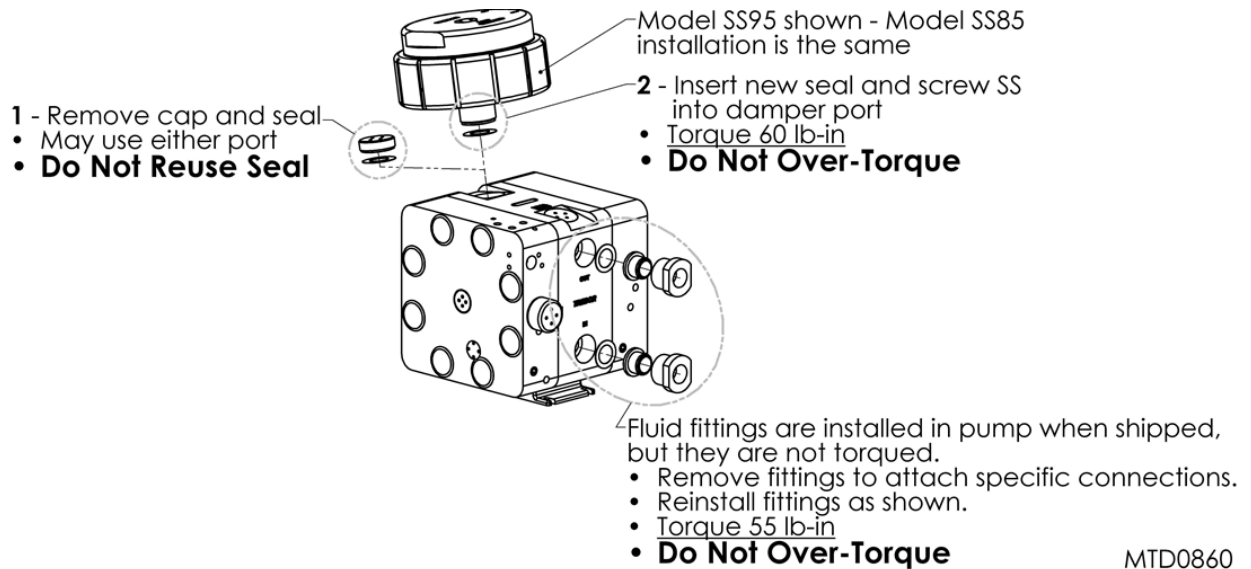


Figure 2-2

NOTE: See Surge Suppressor Operation Manual for detailed installation instructions.

2.4 OPTIONAL LEAK SENSING

2.4.a Installation

- Remove plug and seal from port.
- Install probe assembly into leak sensor port. Probe is self-sealing and does not require a seal.
- Thread probe cap into port. (NOTE: **Do not over tighten**; damage to threads will occur.)
- Connect fiber optic cable to sensor (NOTE: Minimize bends in fiber optic cable to 2" radius minimum to help ensure optimum signal strength.). Fiber optic cable can be cut to desired length using the cable cutter provided.

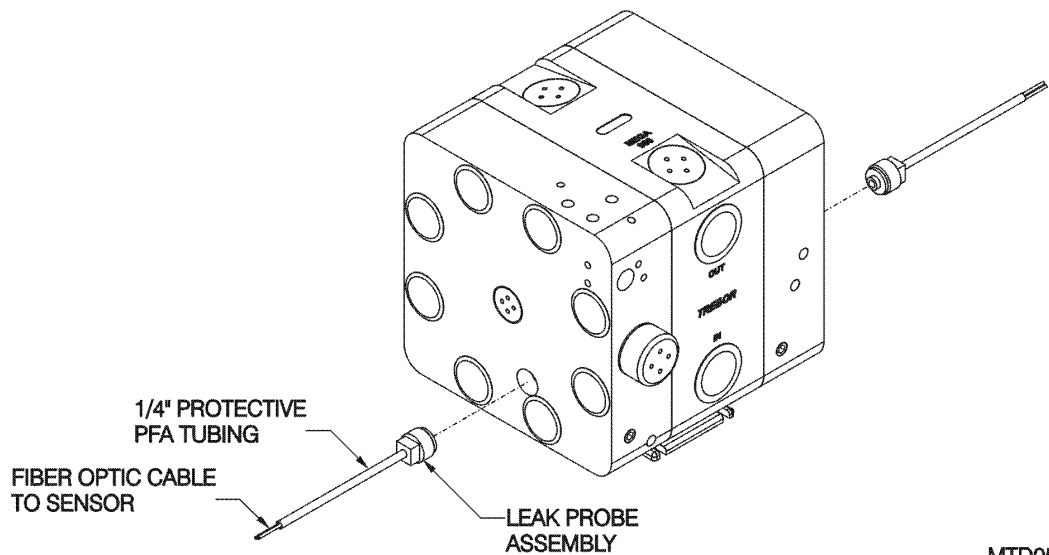


Figure 2-3

MTD0510

3 START-UP

- Pump air supply pressure should be regulated.
- Open the fluid suction (IN) line valve, if necessary.
- Open the fluid discharge (OUT) line valve, if necessary.
- Start with air regulator at low pressure setting. Increase or decrease setting to attain desired flow, up to 80 psig (4.1 bar). Minimum is 20 psig.
- Table 1: Consumption / Efficiency can be used to determine approximate air consumption.
- Refer to Troubleshooting, Section 5, if pump fails to start.

ATTENTION: Prolonged periods of dry running (> 5 minutes) will damage critical internal pump parts.



CAUTION: When handling potentially dangerous fluids under pressure, the pump and its fittings should be placed in an enclosure.

3.1 HIGH TEMPERATURE OPERATION

Pump operation at temperatures above 60°C requires periodic tightening of the tie bolt nuts. The frequency of this procedure is best established by the user.

3.2 PERFORMANCE CHARTS

Pumping capacity is a function of air supply pressure and volume, suction head, suction line restrictions, discharge head, discharge line restriction, and fluid specific gravity and viscosity.

Air Supply Pressure (PSIG)	Discharge Fluid Pressure (PSIG)	Air Used (SCFM)	Cycles Per Minute	Displacement IN ³ Per Cycle
25	2	7.4	108	35
30	3	8.9	116	33
30	10	8.2	100	32
40	5	11.6	152	29
40	20	11.1	108	31
50	10	14.4	156	28
50	30	12.2	104	30
60	20	16.6	156	26
60	50	12.6	94	29

Table 1: Consumption / Efficiency

NOTE: Specification to be used to size regulators and control valves.

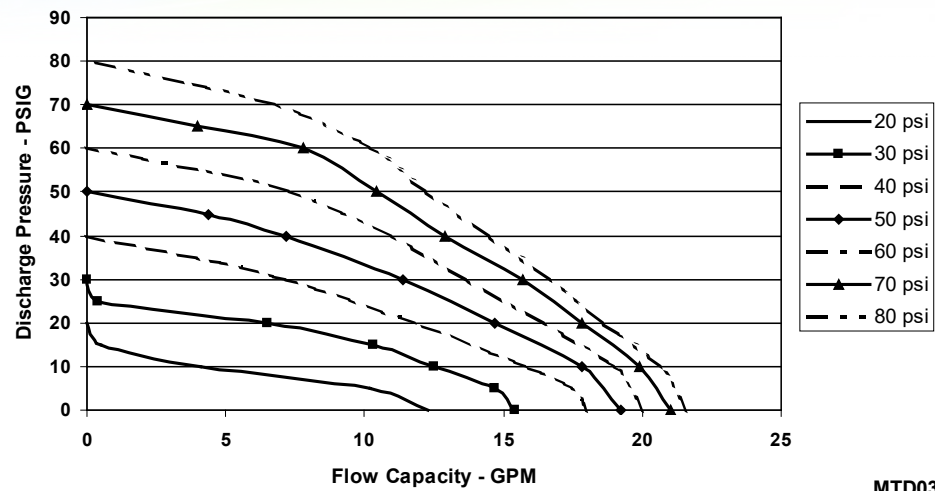


Figure 3-1: Pressure & Capacity Chart

NOTE: Test information is based on specific conditions and limited sampling.
Use for general reference only.

4 MAINTENANCE

Trebor pump maintenance can be divided into two categories: air system maintenance and fluid system maintenance. The purpose of air system maintenance is to prevent air system failures such as stalling or erratic cycling. The purpose of fluid system maintenance is to maintain suction and lift capabilities.

Pump Rebuild Service

Trebor International provides a factory rebuild service for customers using Trebor products. Trebor will rebuild any standard pump (exclusive of options). Please contact Trebor International Sales Department for current rebuild pricing. The fixed rebuild price includes a factory rebuild and parts equivalent to the standard rebuild kit. Each factory rebuild comes with a new one-year warranty. Repairs requiring more extensive part replacements will be quoted prior to proceeding with the pump rebuild. If the pump has exceeded its useful life and cannot be rebuilt, the customer may elect to purchase a new Trebor pump. If the customer chooses not to rebuild or replace the pump, a \$150.00 evaluation charge will be required.

All returned pumps are to be shipped freight prepaid with a valid Purchase Order for the cost of rebuild service. Please contact Trebor International prior to returning your pump to obtain an RMA Number and Pump Return Data Sheet to ensure proper safety precautions. Each pump will be evaluated and repaired within 5 working days of the receipt of pump at Trebor facility.

4.1 PREVENTIVE MAINTENANCE SCHEDULE

The following maintenance schedule is recommended to optimize pump performance and minimize failures. Tie bolt torque should be checked within 30 days of start-up and at periodic intervals thereafter. If the pump is subjected to thermal cycle operation, the tie bolt torque should be checked after the first 3 thermal cycles and periodically thereafter. Certain operating conditions that require more frequent maintenance intervals have been noted. In positive pressure inlet conditions where suction or lift is not required, fluid system maintenance may be extended. However, tie bolt retorque is still recommended.

Adhering to the recommended preventative maintenance schedule along with periodic inspection of the pump will ensure continued efficient operation and overall reliable pump performance.

It is recommended that the Preventive Maintenance Record (Section 4.1.a) be copied, maintained and kept with this unit for future reference.

MEGA 960D Maintenance Schedule

	Install	30 Days	3 Months	6 Months	9 Months	12 Months	15 Months	18 Months	21 Months	24 Months
Tie Bolt Torque (60 lb-in)	I			I		I		I		I
C-Ring and Detent Legs						R				
Pilot Button						R				
Check Seat Wear Rings						R				
Shaft Bushing						R				
Shaft (High Suction Applications)						R				
Shaft										R
Diaphragms and Main Seal										R
Quick Exhaust Seal										R
Check Balls and O-Rings										R
Check Balls and O-Rings (High Suction Applications)										R
Exhaust Muffler Media										R
Distribution Pilots										R
I=Inspect, R=Replace										

4.1.a Preventive Maintenance Record

Company Name: _____

Company Address: _____

Product: _____ Serial Number: _____

Date: _____ Tech: _____ Notes: _____

Date: _____ Tech: _____ Notes: _____

Date: _____ Tech: _____ Notes: _____

Date: _____ Tech: _____ Notes: _____

Date: _____ Tech: _____ Notes: _____

Date: _____ Tech: _____ Notes: _____

Date: _____ Tech: _____ Notes: _____

Date: _____ Tech: _____ Notes: _____

Date: _____ Tech: _____ Notes: _____

Date: _____ Tech: _____ Notes: _____

Date: _____ Tech: _____ Notes: _____

Date: _____ Tech: _____ Notes: _____

Date: _____ Tech: _____ Notes: _____

Date: _____ Tech: _____ Notes: _____

Date: _____ Tech: _____ Notes: _____

Date: _____ Tech: _____ Notes: _____

Date: _____ Tech: _____ Notes: _____

Date: _____ Tech: _____ Notes: _____

Date: _____ Tech: _____ Notes: _____

Date: _____ Tech: _____ Notes: _____

Date: _____ Tech: _____ Notes: _____

Date: _____ Tech: _____ Notes: _____

Date: _____ Tech: _____ Notes: _____

Date: _____ Tech: _____ Notes: _____

4.2 RECOMMENDED SPARE PARTS

KR960D-00-C Spares Rebuild Kit, which includes:

<u>Part No</u>	<u>Qty</u>	<u>Description</u>
KD960-00-A	1	Diaphragm Kit
		Includes: (2) 1900B0023 Diaphragm Set
		(2) 98001585 O-Ring
KM960D-00-C	1	Maintenance Kit
		Includes: (2) 98002987 Pilot Button
		(2) L0119 Muffler Assembly
		(2) 1900B0016 Quick Exhaust Port
		(2) 98003047 Quick Exhaust Seal
		(2) L0197 Detent Leg
		(1) L0145 Detent Ring
98001108	4	Blue Cap
98002240	2	O-Ring -112, FKM
98002261	4	O-Ring -316, PTFE
98002303	4	O-Ring -110, FKM
98002740	4	Check Ball
98003769	2	Push-Plate Screws
L0096-01	2	Discharge Sleeve
L0100-16	16	Tie Bolt Cap Group
L0163	2	Check Cap Seal
L0163-01	2	Check Cap Seal, Solid
L0164	2	Fluid Port Seal
L0191	4	Wear Ring
L0192	1	Shaft Bushing
L0193	2	Suction Sleeve

KR960D-00-D Spares Rebuild Kit, which includes:

<u>Part No</u>	<u>Qty</u>	<u>Description</u>
KD960-00-A	1	Diaphragm Kit
		Includes: (2) 1900B0023 Diaphragm Set
		(2) 98001585 O-Ring
1900B0016	1	Quick Exhaust Port
98001108	4	Blue Cap
98002240	2	O-Ring -112, FKM
98002261	4	O-Ring -316, PTFE
98002303	4	O-Ring -112, FKM
98002740	4	Check Ball, PTFE
98003769	2	Push Plate Screws
98002987	2	Pilot Button
98003047	2	Quick Exhaust Seal
98003769	2	Push-Plate Screws
L0096-01	2	Discharge Sleeve
L0100-16	16	Tie Bolt Cap Group
L0119	2	Muffler Assembly
L0163	2	Check Cap Seal
L0163-01	2	Check Cap Seal, Solid
L0164	2	Fluid Port Seal 1.50x1.00x0.02
L0191	4	Wear Ring 1.42x1.00x0.06
L0192	1	Shaft Bushing
L0193	2	Suction Sleeve

KR960D-G0-A Spares Rebuild Kit, which includes:

<u>Part No</u>	<u>Qty</u>	<u>Description</u>
KD960-00-A	1	Diaphragm Kit
		Includes: (2) 1900B0023 Diaphragm Set
		(2) 98001585 O-Ring
1900B0016	1	Quick Exhaust Port
98001108	4	Blue Cap
98002240	2	O-Ring -112, FKM
98002261	4	O-Ring -316, PTFE
98002303	4	O-Ring -112, FKM
98002987	2	Pilot Button
98003047	2	Quick Exhaust Seal
98003769	2	Push-Plate Screws
L0096-01	2	Discharge Sleeve
L0100-16	16	Tie Bolt Cap Group
L0119	2	Muffler Assembly
L0123	1	Main Shaft
L0163	2	Check Cap Seal
L0163-01	2	Check Cap Seal, Solid
L0164	2	Fluid Port Seal 1.50x1.00x0.02
L0191	4	Wear Ring 1.42x1.00x0.06
L0193	2	Suction Sleeve

In critical applications, a spare pump is recommended to minimize potential down time.

4.3 TOOLS

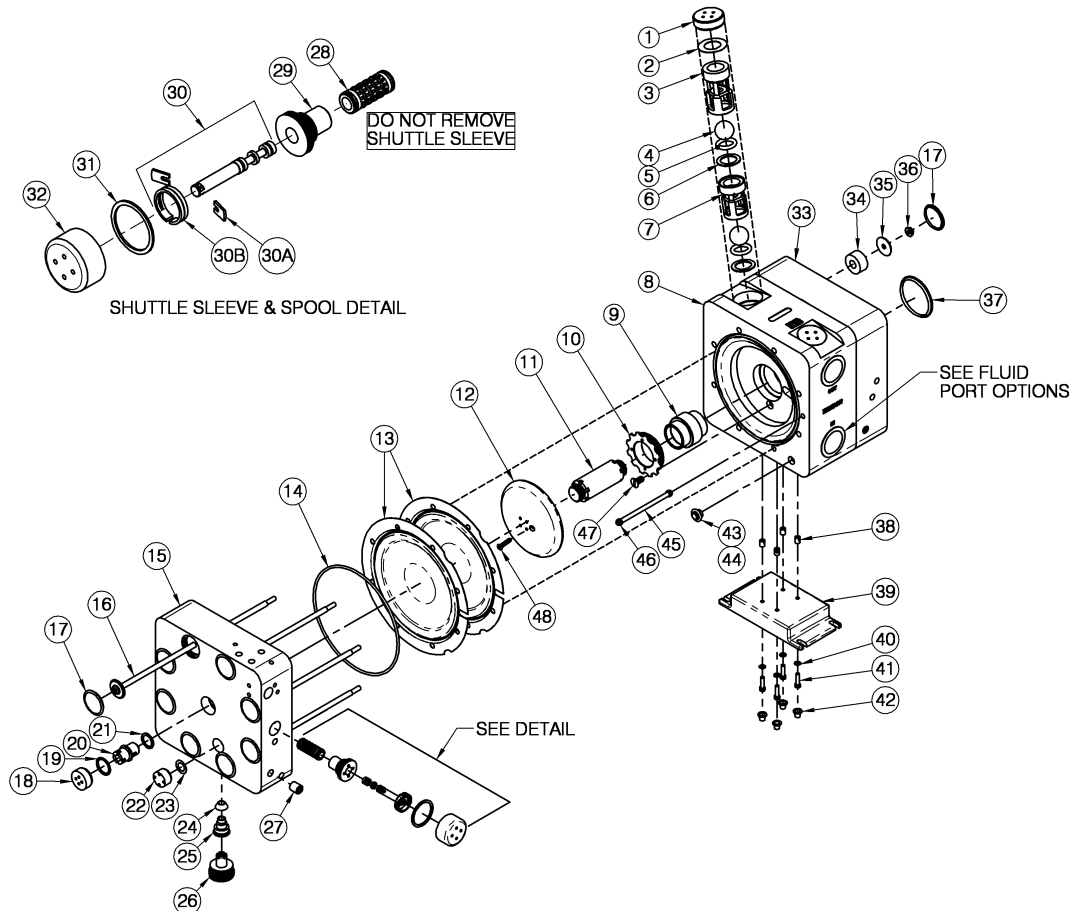
The following tool kit is recommended as standard service equipment.

KT960-00-B Tool Kit, which includes:

<u>Part No</u>	<u>Qty</u>	<u>Description</u>
98001230	1	5/32" Allen Wrench
98002136	2	7/16" Nut Driver
98002859	1	7/16" Socket
98003150	1	Tool Case
98003305	1	Drive Handle
T000B0007	1	Check Sleeve Insertion Tool
T000B0014	1	Check Sleeve Removal Tool
T0146	1	3/4" Pin Tool
T0148	1	1/2" Pin Tool
T0159	1	2" Pin Tool
T0144	1	Cleaning Tool
T0182	1	1/4" Socket Extender
T0229	1	Plugged Check Slave Wrench

4.4 PARTS ILLUSTRATION

□ BORDERS REPRESENT FLUID
CONTACT AREAS OF PUMP



MTD0788

4.5 PARTS LIST

ILL NO	PART NO	QTY	DESCRIPTION	PM YEAR #	MATERIAL
1	L0154-01	2	Check Bore Cap		PTFE
*1	98004617	2	Check Bore Cap (G0 Option)		SS
2	L0163	2	Seal, Check Port	1	PTFE
3	L0096	2	Discharge Sleeve		PTFE
4	98002740	4	Check Ball	1	PTFE
*4	98004616	4	Check Ball (G0 Option)		SS
5	98002261	4	O-Ring	1	PTFE
6	L0191	4	Check Seat Wear Ring		PTFE
7	L0193	2	Suction Sleeve		PTFE
8	L0190	1	Body		PTFE
9	L0192	1	Shaft Bushing	1	PTFE
*9	98004619	1	Shaft Bushing (G0 Option)		SS
10	L0195	1	Locking Ring		PTFE
11	L0123	1	Main Shaft	2	PFA
12	1900B0070	2	Push Plate		PTFE
13	1900B0023	2	Diaphragm Set	1	PFA
14	98001585	2	Main Seal	1	Viton
15	L0141-01	1	Master Head		PP

ILL NO	PART NO	QTY	DESCRIPTION	PM YEAR #	MATERIAL
16	1900B0027-01	8	Tie Bolt Assembly	1	SS, PFA
17	L0100	16	Tie Bolt Cap		LDPE
18	L0208	2	Cap, Pilot		PP
19	W0116	2	Seal, Pilot Cap		PTFE
20	W0123	2	Assembly, Pilot Valve, Wear Resistant		Peek, PTFE, PPS, Viton
21	W0117	2	Seal, Pilot Sleeve	1	PTFE
22	AM040	2	Leak Port Cap		PP
23	L0167	2	Leak Port Seal		PTFE
24	98003047	2	Quick Exhaust Seal		Viton
25	1900B0016	2	Quick Exhaust Port		UHMW
26	L0119	2	Muffler Assembly	1	PP
27	98003080	2	Plug, Remote Exhaust		PE
28	AK058	1	NM Sleeve Assembly		Ceramic, PTFE
29	L0105	1	Adapter, Detent		PP
30	L0131	1	Assembly, Spool External, High Load		Ceramic, PEEK, Torlon
*30	BQ044	1	Assembly, Magnetic (STD G0 Option)	1	Ceramic, PEEK, Torlon
30A	L0197	2	Leg, Detent		PP
30B	L0145	1	Ring, Detent, High Load		NPRN,EPD
31	L0113	1	Seal, Detent Cap		M
32	L0104	1	Cap, Detent External		SS
*32	BQ046	1	Assembly, Cap, Magnetic (STD G0 Option)	1	SS
33	L0139-01	1	Slave Head		LDPE
34	L0140	8	Bushing		SS
35	1900A0028-01	8	Tie Bolt Washer		SS
36	98002341	8	Nut, Flange, SS, 1/4 - 20		LDPE
37	98002620	1	Label Cap	1	SS
38	98001418	4	Insert		PP
39	1900B0033	1	Pump Base		SS
40	98001093	4	Washer		LDPE
41	98001375	4	Screw		PFA
42	98001108	4	Cap, Blue	1	Viton
43	1900A0024	2	Main Transfer Tube		PFA
44	98002240	2	O-Ring		Viton
45	1900A0025	1	Shuttle Transfer Tube		PTFE
46	98002303	4	O-Ring		PTFE
47	98003755	1	Screw, Locking Ring	1	PTFE
48	98003769	2	Screw, Push Plate		PTFE

* Option G0 Component

4.6 CLEAN-UP

To help remove potentially dangerous chemicals, the pump can be flushed with DI water or disassembled and thoroughly cleaned.

4.7 DISASSEMBLY

During the life of the pump it will be necessary to perform certain preventative maintenance procedures to ensure its continued high performance. This section and the next (4.8 Assembly) are provided for the user's convenience in disassembly and re-assembly in performing these procedures.

-
- Thoroughly clean/flush the pump using DI water (Refer to Section 4.6 Clean-Up).
 - Remove tie bolt caps from the slave head.
 - Remove nuts from the tie bolts (Slave Head side). Leave tie bolts in place.
 - Lay the pump on its side with slave side up.
 - Lift off the slave head.
 - Remove the main seal and diaphragms.
 - Remove the O-rings from the shuttle transfer tube.
 - Remove the body assembly.
 - Remove the second set of diaphragms and main seal.
 - Remove the transfer tube and O-rings from the heads and body.
 - Remove the remaining tie bolt caps and tie bolts.

NOTE: All polypropylene and fluoroplastic parts, when disassembled, should be thoroughly washed and be free from chemical residue for handling purposes.

4.7.a Head Disassembly

- Remove label cap (Slave Head only).
- Remove smart pilot cap from master and slave heads.
- Remove pilot valve and seals from Master and Slave Heads.
- Remove the shuttle cap and seal from the Master Head.
- Remove the shuttle spool assembly from the adapter detent.
- Remove C-ring and detent legs from shuttle spool assembly.
- Remove Detent Adapter
- **Do not remove** the shuttle sleeve assembly from the shuttle bore.
- Remove the muffler spool and muffler pads from each head.
- Remove quick exhaust ports from heads.
- Remove quick exhaust seals.
- Remove remote exhaust plugs (if necessary).

4.7.b Body Disassembly

- Remove check bore caps using 3/4" pin tool and remove seals.
- Remove sleeves, balls, O-rings and check seat wear rings. Do not use excessive force.
- Unthread push plate locking screw and push plate from the one side of the shaft.
- Remove remaining shaft and push plate from body.
- Unthread second locking screw and push plate from shaft.

- Unthread shaft bushing locking screw from body.
- Using 2" pin tool, insert pins in shaft bushing locking ring located in the master head side of chamber and rotate CCW to remove bushing. Then push out bushing from the slave head chamber side.

4.8 ASSEMBLY

Prior to beginning assembly, inspect all parts to ensure they are clean and dry. Wear clean protective gloves.

4.8.a Pilot Valve (Both Heads)

NOTE: Do not use any tools to install the pilot button. Use of tools may damage the button.

- Remove existing pilot button and discard.
- Replacement pilot button should be tightened enough that the underside of the head touches the pilot piston.
- No light should be visible between the bottom of the button head and the piston.

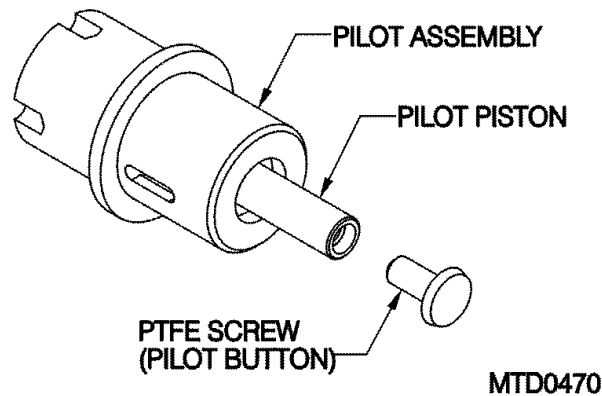
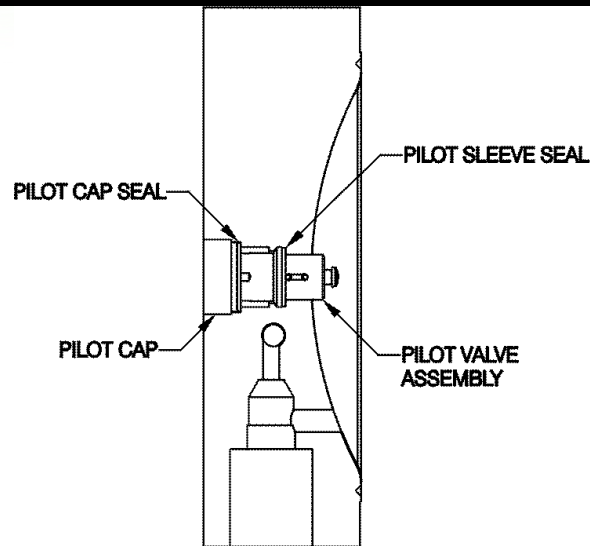


Figure 4-1

- Slide seal onto pilot valve body until even engagement with the shoulder is reached. The shoulder is located in the center of the pilot valve body.
- Thread the pilot valve assembly into the pilot bore of the head as shown in Figure 4-2. Tighten to 25 in-lbs. Do not over tighten.



MTD0311

Figure 4-2

- Install pilot cap seal.
- Thread pilot valve cap to engage seal. Tighten to 45 in-lbs.
- Repeat process for both heads
- Install label cap (Slave Head only).

4.8.b Shuttle Spool Assembly

- Hold shuttle spool (item 1) upright and align slot in detent legs (item 2) with notch on shuttle spool, see Fig. 1.
- Apply pressure upward onto base of detent legs with thumb and index finger, as shown in Fig. 2.
- Tilt the detent ring (item 3) over one of the legs, and align the groove on the inside of the detent ring with the end of the detent leg. Tilt the other side of the ring down, expanding it slightly, so that the other detent leg snaps into the detent ring groove. See Fig. 3. The completed assembly should look like Fig. 4.

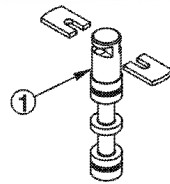


FIG. 1

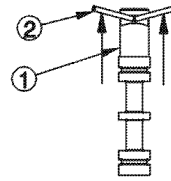


FIG. 2

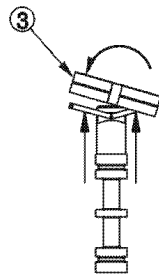


FIG. 3

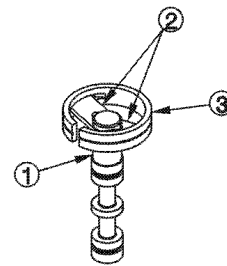


FIG. 4

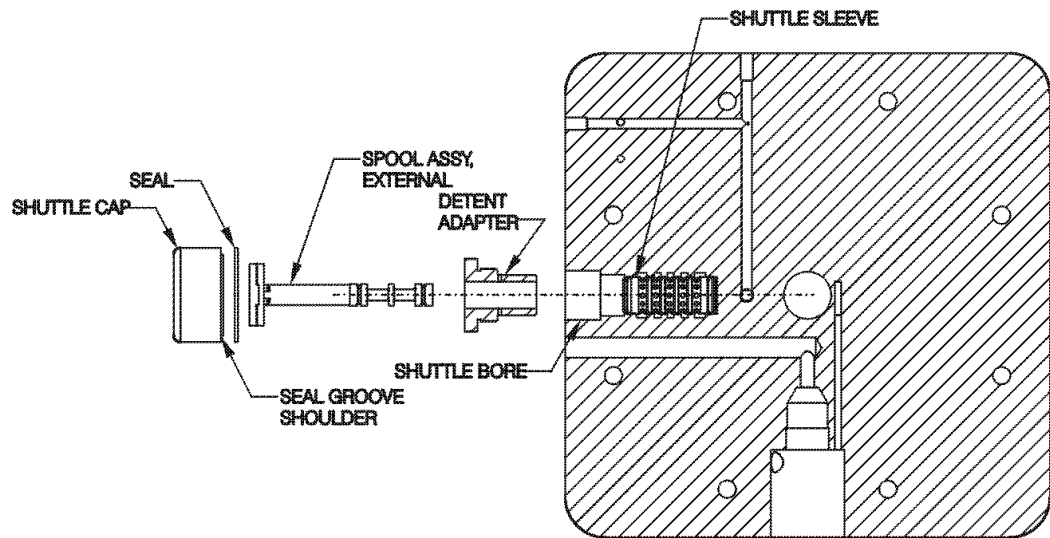
MTD0312

Figure 4-3

4.8.c Shuttle Assembly (Master Head)

NOTE: Ensure that the spool moves freely inside the sleeve prior to installation.

- Thread detent adapter into shuttle bore until flush against head. Tighten to 45 in-lbs.
- Insert shuttle spool assembly into adapter detent and Shuttle Sleeve. (Do not lubricate.)



MTD0313

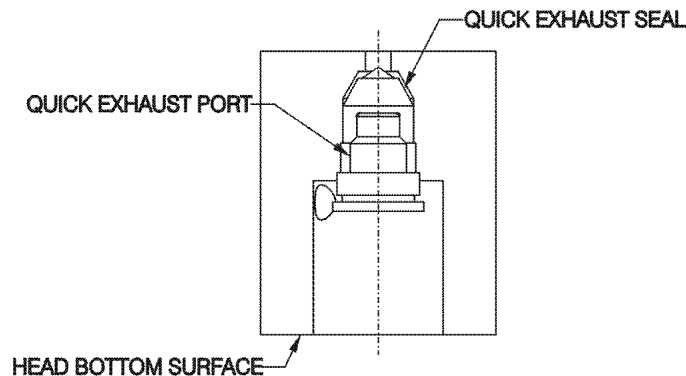
Figure 4-4

- Install the seal onto seal groove shoulder of the shuttle cap.
- Thread shuttle cap onto detent adapter. Tighten to 40 in-lbs.

ATTENTION: Threads should be snug. Do not over tighten.

4.8.d Quick Exhaust (Both Heads)

- Insert quick exhaust seal.
- Insert quick exhaust port in each head as shown. Tighten to 15 in-lbs. Do not over tighten.



MTD0316

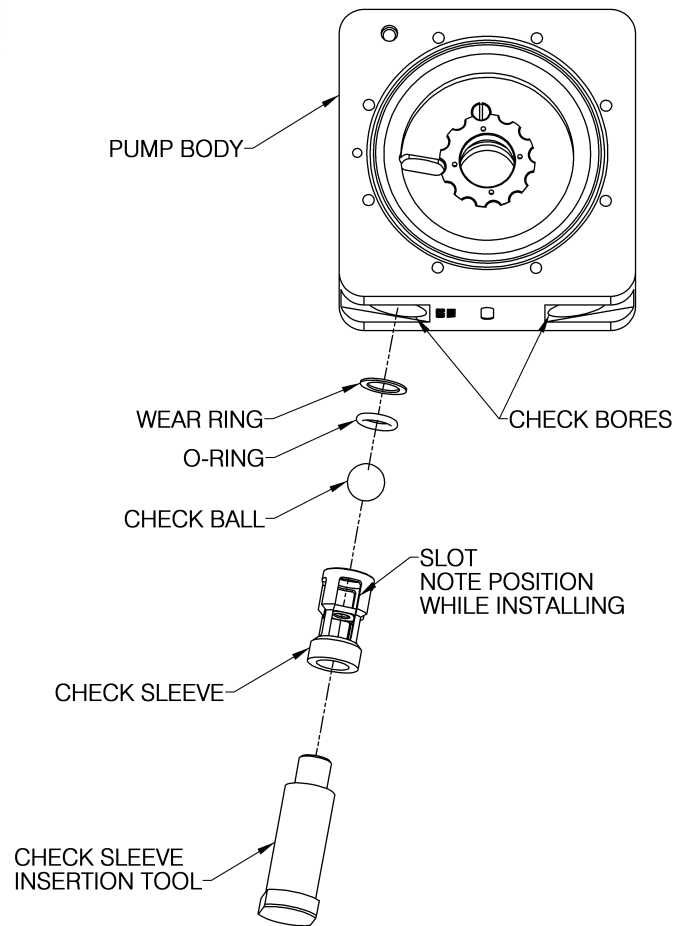
Figure 4-5

- Install 2 each muffler pads onto muffler spool and insert into exhaust port. Tighten until the spool head is level with or slightly recessed into the head surface and a minimum of 30 in-lb is reached.

4.8.e Body Assembly

NOTE: For easy installation, check sleeves that do not install easily (minimal effort) can be placed in a freezer prior to assembly to assist insertion. Body must be upside down with check port extending over a table edge so that parts remain assembled during insertion of sleeves (See Figure 4-6.)

- Insert suction sleeve, check ball, O-ring and wear ring carefully into check bore.

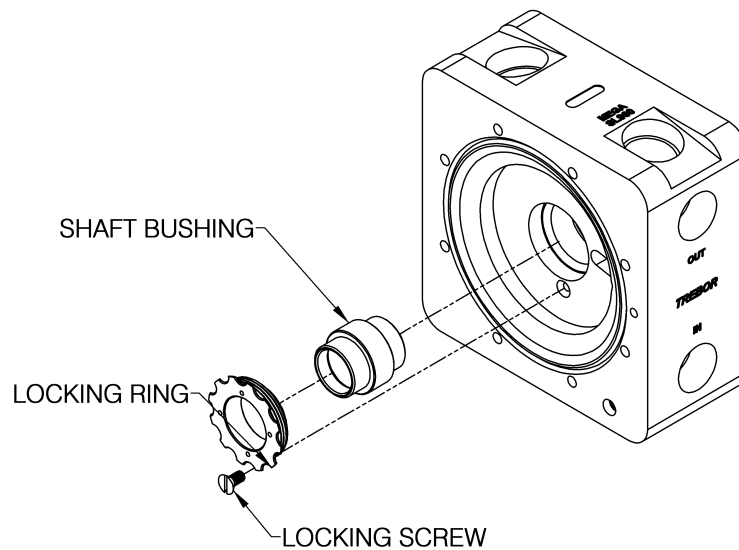


MTD0789

Figure 4-6

NOTE: The suction sleeves are 2-1/2" (6.35 cm) long. The discharge sleeves are 2.846" (7.2cm) long.

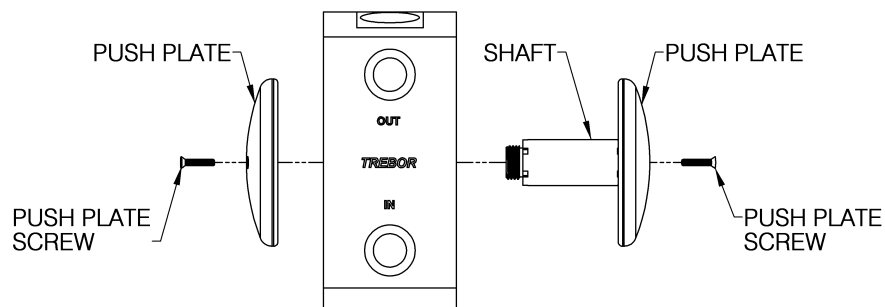
- Repeat insertion process with the discharge sleeve, check ball, O-ring and wear ring.
- Place seal and tighten check bore caps 60 in-lbs.
- Repeat process for second check bore.



MTD0790

Figure 4-7

- Install shaft bushing per Figure 4-7.
- Install locking ring until flush with fluid cavity face and resistance is met.
- Tighten until next available notch aligns with locking screw hole, check to assure that the shaft bushing does not move.
- Insert locking screw into hole and tighten until flush with locking ring.
- Thread one push plate onto shaft until push plate bottoms out on shaft shoulder.
- Tighten push plate to 48 oz-in, and then rotate CW until locking screw hole is aligned with the next available hole in shaft. The first push plate can be visually aligned separate from the body.
- Install push plate locking screw. Tighten to 12 oz-in.



MTD0791

Figure 4-8

- Insert shaft through shaft bore as shown in figure 4-8.
- Thread on remaining push plate until push plate bottoms out on shaft shoulder.

-
- The second push plate, while in the pump body, cannot be visually aligned. Tighten push plate to 48 oz-in, then insert alignment pin into locking screw hole. Rotate push plate CW until locking screw hole is aligned with the next available hole in shaft and alignment pin drops into the shaft hole. Remove alignment pin.
 - Install push plate locking screw. Tighten to 12 oz-in.

4.8.f Final Assembly

(See Section 4.4, Parts Illustration, for reference.)

- Insert tie bolts into master head (press fit) and lay head flat with tie bolts sticking up.
- Insert main transfer tube and O-ring into head.
- Install shuttle transfer tube with two O-rings.
- Place main seal into the main seal groove in master head.
- Install two diaphragms, removing all air from between diaphragms, onto the tie bolts and shuttle transfer tube. Note main seal groove alignment.
- Place body assembly onto tie bolts and master head, ensuring alignment of shuttle transfer tube and its corresponding body passage hole.
- Place remaining two diaphragms onto tie bolts, body and shuttle transfer tube. Note main seal groove alignment.
- Place two O-rings onto shuttle transfer tube.
- Place the main seal O-ring into the formed groove of the slave head.
- Place a second main transfer tube and O-ring into slave head.
- Lift the slave head and body, while maintaining compression of the main seal, flip the head and body over and insert the tie bolts into the master head. Ensure that the main seal of the master head is not dislodged.
- Place all bushings & flat washers onto tie bolt threaded ends.
- Install flange nuts onto tie bolts, tighten evenly in a star pattern (do not overload one side before applying torque to another as dislodgment of main seal can occur), final torque is 60 in-lbs.
- Snap in tie bolt caps.

4.9 TESTING

4.9.a Performance Test

- With the air supply at 0 psi open the air supply valve
- Increase the air pressure until the pump starts to cycle
- Record the start pressure, Target = <20psig
- Pump must prime once even cycling is achieved
- Increase pressure to 60 psi
- Check for fluid leaks, listen for air leaks, check for irregularity
- Close the discharge valve and deadhead for 2 minutes
- Pump must not experience jog, erratic cycling or leaks
- Open discharge valve and expel the remaining DI water
- Prepare the pump for drying

4.9.b Dry Pump

- Connect vacuum hose to discharge line
- Connect purge line to fluid inlet
- 60 psig Supply Pressure
- Cycle pump & vacuum dry by rotating pump side to side for 30 seconds.
- Turn off Air Supply and allow the pump to purge for 5 minutes.

4.9.c Dry Suction

- 20 psig Supply Pressure Target
- Record Suction Value
- Target = 14 in-Hg.

5 TROUBLESHOOTING

Pump Will Not Start, Fails to Operate

Cause:

Insufficient air pressure (must be enough to energize the pilot and shuttle valves).

Pilot valves 'buzzing'.

Insufficient air volume.

Dirty or damaged shuttle valve.

Damaged, sticky pilot valve (not following diaphragm properly).

Fluid discharge line blocked.
Downstream valve closed, filter plugged or other obstruction.

Solution:

There must be minimum 20 psig at pump air hook-up.

See Performance Charts (3.1) for requirements.
Reference regulator and control valve capacity specifications.

Clean shuttle spool assembly and sleeve until free movement is assured (see 4.7.a, 4.7.b), or replace.

Pilot valve piston must slide freely, full travel, in pilot valve sleeve.

Remove pilot pistons and check for debris or chemical attack.

Replace damaged valve assembly.

Remove obstruction.

Bubbles in Fluid Discharge

Cause:

Leaking fluid inlet fitting.

Leaking main seal.

Pump inlet line pressure reached saturation point (due to high suction requirement).

Ruptured (perforated) diaphragm.

Solution:

Tighten, or remove and wrap with TFE thread tape prior to tightening. Replace adapter O-ring.

Tighten tie bolt nuts to 60 in-lbs. Replace main seals if damaged.

Increase diameter of suction supply line (reduces restriction).

Reduce output flow.

Replace diaphragms.

Fluid Leaks

Cause:

Tie bolt torque not enough to effect seal.

Damaged main seal.

Check bore cap.

Ruptured diaphragm(s) can result in fluid leaks through air exhaust port.

Solution:

Tighten all nuts to 60 in-lbs.

Replace.

Check for irregularities in diaphragm groove on pump body.

Tighten, or remove and replace seal.

Replace diaphragms, and any parts that may have been damaged by fluid exposure.

Erratic Cycling

Cause:

Leaking detent cap.
Supply line restricted (cavitation).
Quick exhaust seal not seating.

Pilot valve not following diaphragm correctly.

Check ball(s) not seating.

Pilot transfer leak.

Solution:

Tighten and/or replace seal.
Reduce fluid restriction.
Check for particles between seal and port. Replace seal.

Pilot valve piston must slide freely, full travel in pilot valve sleeve.

Replace damaged pilot valve assembly..
Check O-rings for damage; replace if necessary.
Make sure check balls move freely in sleeves.

Tighten tie bolts to 60 in-lbs.
Replace transfer seals.

6 WARRANTY AND EXCLUSIONS

See the Trebor Standard Limited Warranty at

<https://www.treborintl.com/sites/default/files/TreborStandardLimitedWarranty.pdf>

7 CONTACT INFORMATION

7.1 GENERAL CONTACT INFORMATION

Web: www.treborintl.com
Phone Number: (801) 561-0303
Toll Free Number: (800) 669-1303
Fax Number: (801) 565-1510

Email: treborinfo@idexcorp.com
treborsales@idexcorp.com

Address: Trebor International
8100 South 1300 West
West Jordan, Utah 84088 U.S.A.

7.2 TECHNICAL SUPPORT

Email: treborservice@idexcorp.com
Phone Number: (801) 561-0303

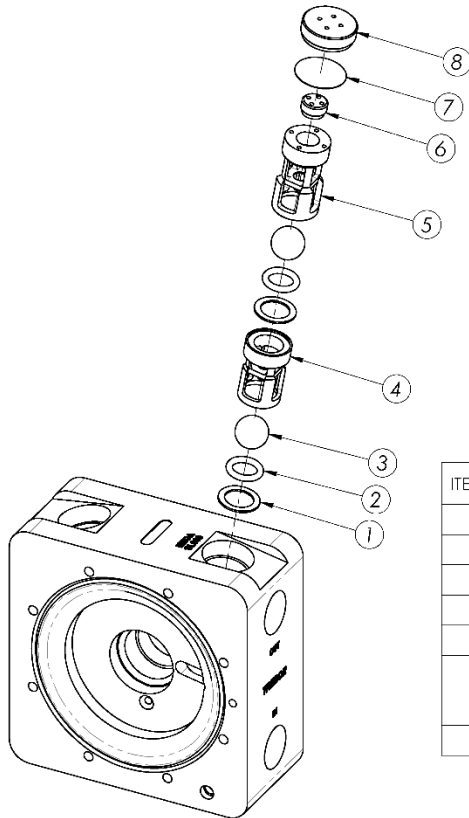
7.3 REGIONAL REPRESENTATIVES

Web: <http://www.treborintl.com/distributors>

8 ADDENDA

8.1 DISCHARGE SLEEVE ADDENDUM

Parts Illustration



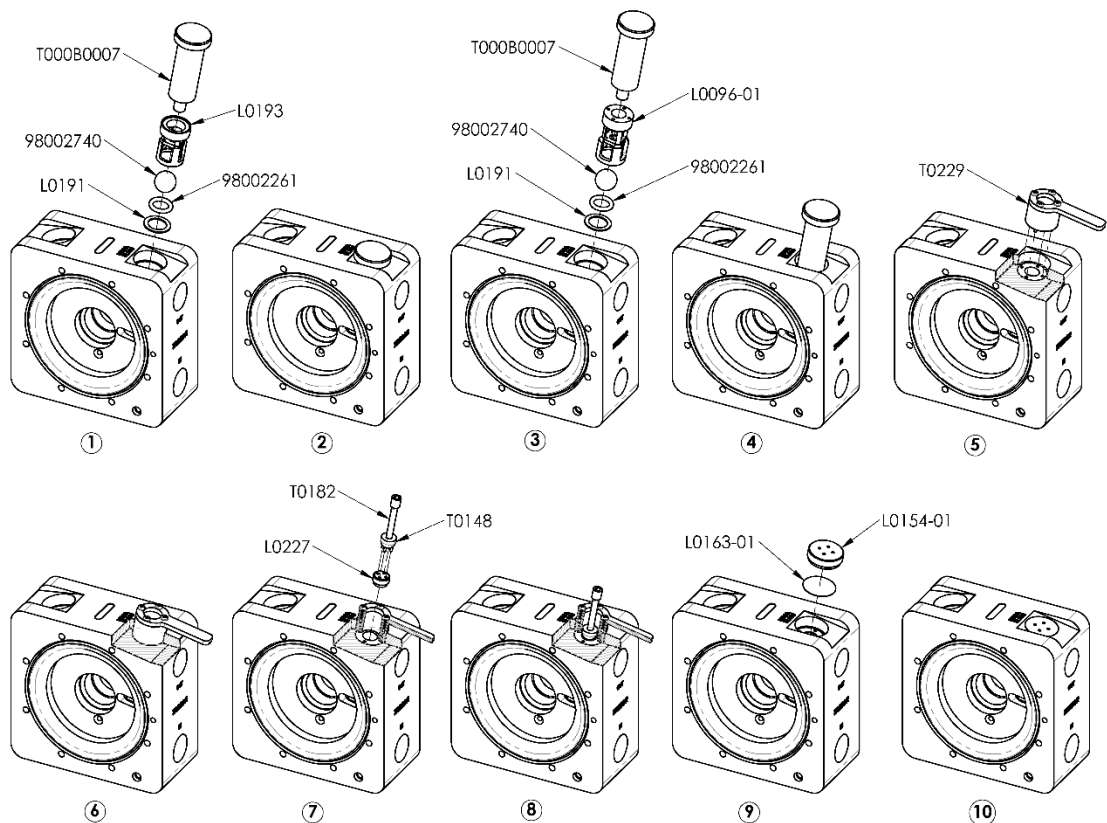
ITEM NO.	PART NUMBER	DESCRIPTION	QTY.
1	L0191	CHECK SEAT WEAR RING	2
2	98002261	O-RING	2
3	98002740	CHECK BALL	2
4	L0193	SUCTION SLEEVE	1
5	L0096-01	DISCHARGE SLEEVE	1
6	L0227	DISCHARGE SLEEVE PLUG	1
7	L0163-01	CHECK PORT SEAL	1
8	L0154-01	CHECK CAP	1

MTD0980-A

Installation Instructions

- 1) Insert check seat wear ring (L0191), O-ring (98002261), check ball (98002740), and suction sleeve (L0193) into check bore of pump body.
- 2) Press suction sleeve (L0193) into check bore using sleeve insertion tool (T000B0007).
- 3) Insert check seat wear ring (L0191), O-ring (98002261), check ball (98002740), and discharge sleeve (L0096-01) into check bore of pump body.
- 4) Press discharge sleeve (L0196-01) into check bore using sleeve insertion tool (T000B0007).
- 5) Insert check sleeve alignment tool (T0229) into discharge sleeve (L0196-01).

- 6) Align discharge sleeve (L0196-01) using check sleeve alignment tool (T0229) as shown.
- 7) Install check sleeve plug (L0227) into discharge sleeve (L0196-01) using ½" pin tool (T0148) and drive extension (T0182) as shown.
- 8) Torque check sleeve plug (L0227) to **35 in-lbs**.
- 9) Install check port seal (L0163-01) and check cap (L0154-01) as shown.
- 10) Torque check cap (L0154-01) to **60 in-lbs**.



MTD0980-B